



# ULTIMATE REPAIR

The ultimate regimen for damaged hair, with our most powerful technology to repair hair damage in **90 seconds\***.



NEW

## IN-SALON

## AT HOME

### CUT & STYLE

Miracle Hair Rescue and Protective Leave-in can be used after any shampoo or conditioner.



### COLOR & LIGHTENING

Choose the **ULTIMATE REPAIR** total package.



### THE ULTIMATE BLOWOUT

Can be added to any in-salon service or as a standalone service for customers who experience damaged hair.



### ANTI-FRIZZ SHIELD

For the highest level of control.



### HIGHEST LEVEL OF REPAIR

Choose the **ULTIMATE REPAIR** total package.



### HIGHEST LEVEL OF COLOR PROTECTION

Choose the **ULTIMATE REPAIR** total package.



\*When using ULTIMATE REPAIR Miracle Hair Rescue. \*\*With non-conditioning shampoo. \*\*\*With ULTIMATE REPAIR Shampoo, Conditioner, Mask, Miracle Hair Rescue, Protective Leave-in & blow dry.

## MASK

**6x** EASIER DETANGLING\*

A **SMOOTHER LOOK**  
WITHOUT A STYLER\*\*

Intense smoothing mask for all hair types without overweighing the hair.

**AHA** repairs hair on the inside.  
**Omega-9** smooths hair on the outside.

Apply to pre-shampooed, towel dried lengths and ends.

Leave on 5-10 minutes before rinsing.



## PROTECTIVE LEAVE-IN

**5-IN-1 PROTECTION AGAINST:**

- BREAKAGE
- MECHANICAL DAMAGE
- UV
- FRIZZ
- 450°F HEAT

**ANTI-FRIZZ** EFFECT FOR UP TO  
**72 HOURS.**

Delicate cream serum that protects, repairs, and smooths **all hair types**.

Apply on towel-dried lengths and ends.  
Style as usual.  
Suitable for everyday use.

## ULTIMATE REPAIR MASK ADAPTIVE TECHNOLOGY



### WHAT IS ADAPTIVE TECHNOLOGY?

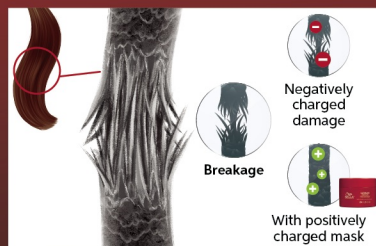
- Targeted technology for personalized repair.
- Adaptive conditioning agents “detect” the most damaged parts of the hair to repair it accordingly.

### WHAT DOES ADAPTIVE TECHNOLOGY DO?

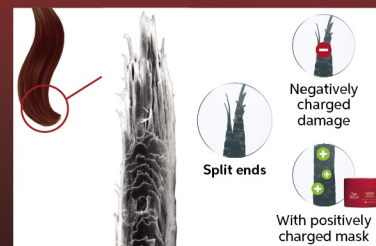
- Damaged hair is negatively charged (anionic) and the mask’s conditioning agents are positively charged (cationic).
- The positively charged conditioning agents are attracted directly to the negatively charged damaged areas of the hair like a magnet.
- This reduces the risk of the mask over-depositing or weighing down the hair.



**DAMAGE DUE TO  
HAIR EXTENSIONS**



**DAMAGE DUE TO  
HAIR ELASTICS**



**DAMAGE DUE TO  
HOT TOOLS**

For more details on the  
**ULTIMATE REPAIR** product  
line-up, scan here:





## WHAT IS IT



## HOW IT WORKS



## HOW TO USE



### SHAMPOO

A rich cream shampoo that cleanses gently and effectively with a luxurious lather.

Removes all the small impurities that can be harmful to the hair (metals, product build-up, oils, dirt and pollution) and starts to rebuild the hair.

Apply to wet hair, lather thoroughly and rinse. Repeat as desired.



### CONDITIONER

Deep conditioner with a creamy texture for daily usage to detangle, deeply strengthen and repair.

Gives intense inner strength without weighing the hair down. Leaving the hair soft to touch, feeling clean and fresh.

Apply to shampooed, damp hair starting on the most damaged areas. Leave on for 30 seconds for moderately damaged hair, and up to 3 minutes for most damaged hair.



### MASK

Intense smoothing mask for detangling without a heavy feel.

- 6x easier detangling.<sup>1</sup>
- Formulated with AHA & Omega-9.

Adaptive Technology has conditioning agents which detect the most damaged parts of the hair to repair it.

Apply to pre-shampooed, towel-dried hair. Process for 5-10 minutes before rinsing.



### MIRACLE HAIR RESCUE

A treatment to repair hair damage in 90 seconds.<sup>2</sup>

- 99% less breakage.<sup>3</sup>
- 12x smoother hair.<sup>4</sup>
- Shinier hair after each use.

Intensively strengthens and smooths hair thanks to AHA & Omega-9.

Mist generously over towel-dried, clean hair and gently comb through. Leave it on for 90 seconds before styling. Do not rinse and style as usual.



### PROTECTIVE LEAVE-IN

Delicate cream serum.

- 5-in-1 protection against breakage, uv, 450°F heat, mechanical damage, and frizz.
- Anti-frizz effect for up to 72 hours.

Protects, repairs, and smooths all hair types to give instant frizz control and easier styling.

Apply to mid-lengths and ends of clean, damp hair before styling. Can also be applied to dry hair for additional smoothing.